



ASHFORD  
HOMES  
(SOUTH WESTERN) LIMITED

# WHITE HORSE VALLEY

---

BRATTON | WILTSHIRE

# WHITE HORSE VALLEY

BRATTON, WILTSHIRE BA13 4TB



White Horse Valley is a collection of new beautifully crafted homes, including bungalows, ranging from two to four bedrooms in the highly desirable and picturesque village of Bratton in Wiltshire.

Situated approximately 2.5 miles east of Westbury and nestled on the northern edge of Salisbury Plain, the village is renowned for its rich history, vibrant community, and scenic landscapes. Bratton boasts a variety of amenities catering to the needs of its residents. The village is home to a well-stocked convenience store, Central Stores, which includes a bakery and Post Office, serving the community since 1906. For dining and socialising, The Duke public house offers a welcoming atmosphere and a popular restaurant. Healthcare needs are met by Bratton Surgery, an outpost of Westbury's White Horse Health Centre, providing consultations, basic nursing, and a dispensary. Additionally, Fitzroy Farm, located nearby, features a coffee shop, hairdresser, and Bratton Plant Centre.



*The Westbury White Horse and earthworks at Bratton Camp  
The original Iron Age Hill Fort was built over 2,000 years ago to protect a settlement containing round houses, granaries, stores and workshops*

*The view from Combe Hill towards Bratton and St James' Church. The village is situated on the edge of North Wessex Downs National Landscape.*



The village supports an active community life with two village halls: the Jubilee Hall, hosting the Jubilee Players amateur dramatic group and various fitness and community classes, and the Church Institute, accommodating Bratton Silver Band and several other village organisations. Recreational facilities include a recreation ground with a cricket pitch, football pitches, a trim trail, and a large pavilion, providing ample space for sports and outdoor activities.

Bratton is steeped in history, with notable landmarks such as the Iron Age hill fort, Bratton Camp, and the iconic Westbury White Horse carved into the hillside, both located within the parish. These sites offer residents and visitors alike opportunities for exploration and appreciation of the area's rich heritage.

Bratton is ideally situated near several thriving towns and cities, offering residents a perfect balance between rural charm and convenient access to a wider range of amenities. Just 2.5 miles away, the historic market town of Westbury provides essential shopping facilities, supermarkets, independent retailers, and a variety of cafes and restaurants. Westbury is also home to a well-connected railway station, offering direct services to Bath, Bristol, London, and the South West, making it an excellent option for commuters.

A short drive north-west leads to Trowbridge, the county town of Wiltshire, which boasts an extensive selection of shops, supermarkets, and leisure facilities, including a cinema, gym, and a variety of restaurants. Trowbridge also offers a rich industrial heritage, with its historic cloth mills and museums adding to its cultural appeal.

Further afield, the beautiful Georgian city of Bath, located around 17 miles from Bratton, is a major attraction for both residents and visitors. Famous for its stunning architecture, Roman Baths, and vibrant shopping and dining scene, Bath is a cultural hub that offers a fantastic day out.

Similarly, Salisbury, with its magnificent cathedral and medieval streets, is easily accessible and provides an array of cultural, retail, and dining experiences.

For those seeking a wider selection of employment opportunities, retail options, and entertainment, Bristol and Swindon are both within an hour's drive, offering extensive shopping centres, business districts, and renowned attractions such as Bristol's harbourside, SS Great Britain, and Swindon's Designer Outlet Village. With such a variety of nearby towns and cities, Bratton provides an excellent location for those who appreciate village life but also value easy access to larger urban centres.

Bratton offers educational facilities for young children, including a primary school and a recently established pre-school, ensuring accessible education within the village. For secondary education, students typically attend nearby schools such as Matravers School in Westbury, which serves Westbury and surrounding villages, including Bratton.

The village is served by a bus service with regular routes to Devizes and Westbury during the day, facilitating convenient travel for residents. For rail services, the nearest station is in Westbury, offering connections to various destinations, including Bath, Bristol, and a direct line to London, enhancing the village's connectivity to larger urban centres.

In summary, Bratton combines the charm of rural village life with essential amenities, educational facilities, and transport links, making it a desirable location to live for residents seeking a blend of community spirit and accessibility.

# HOW TO FIND US



# SITE PLAN



Please note that the specification was correct at the time of going to print but Ashford Homes continually review their specifications and reserve the right to make any changes. The measurements have been taken from the plan provided but there may be variations in the final build. The computer generated images are for illustrative purposes only and are not intended to be scaled or used to indicate boundaries and should only be used for guidance. Prospective purchasers are advised that the development name may not be the final postal address.

*The view from the Iron Age Hill Fort  
at Bratton Camp looking towards the  
thriving picturesque village of Bratton*





*White Horse Valley  
provides 35 beautifully crafted  
two, three and four bedroom luxury homes*

### *The Heywood*

Plots 1, 4 –  
3 bedroom properties

### *The Edington*

Plots 2, 3 –  
2 bedroom properties

### *The Poplar*

Plots 10, 11, 12 –  
3 bedroom properties

### *The Elmhurst*

Plots 5, 13, 23, 31 –  
3 bedroom properties

### *The Poplar*

Plots 10, 11, 12 –  
3 bedroom properties

### *The Merlin*

Plots 18, 19, 29, 30 –  
3 bedroom properties

### *The Mayfield*

Plots 20, 21 –  
2 bedroom properties

### *The Fulwell*

Plots 22, 24, 28 –  
4 bedroom properties

### *The Norton*

Plot 25 –  
4 bedroom property

### *The Pickford*

Plot 26 –  
4 bedroom property

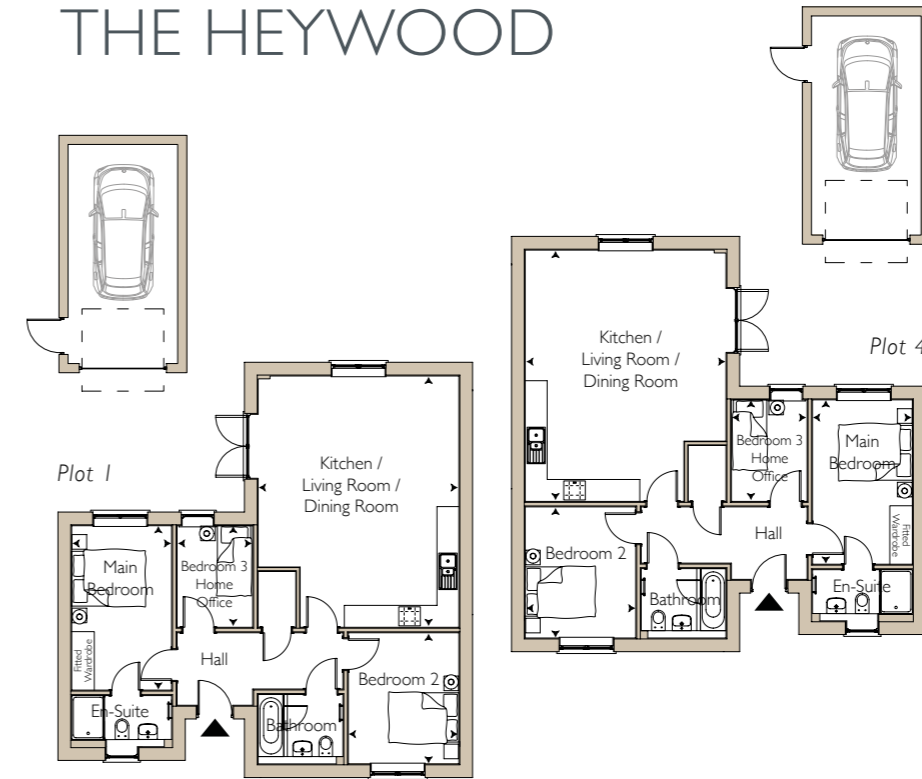




CGI is of Plot 4



# THE HEYWOOD



The Heywood is a thoughtfully designed three-bedroom bungalow, complete with a single garage and EV car charging point. At the heart of the home is a bright and spacious open-plan kitchen, living, and dining area, perfect for modern living and entertaining. Doors open directly onto the rear patio and garden, creating a seamless indoor-outdoor flow.

The property offers three well-proportioned bedrooms, including a versatile third bedroom that can also be used as a home office. The main bedroom benefits from fitted wardrobes and a stylish en-suite, while a contemporary family bathroom serves the remaining rooms.

Please note these measurements have been taken from the plan provided but there may be variations in the final build. Computer generated images are for illustrative purposes only.

PLOTS 1 • 4

**Kitchen / Living / Dining**  
5.50m x 6.88m  
(18'0" x 22'7")

**Bedroom 1**  
2.74m x 4.50m  
(8'12" x 14'9")

**Bedroom 2**  
3.03m x 3.59m  
(9'11" x 11'9")

**Bedroom 3 / Study**  
2.07m x 2.78m  
(6'9" x 9'1")

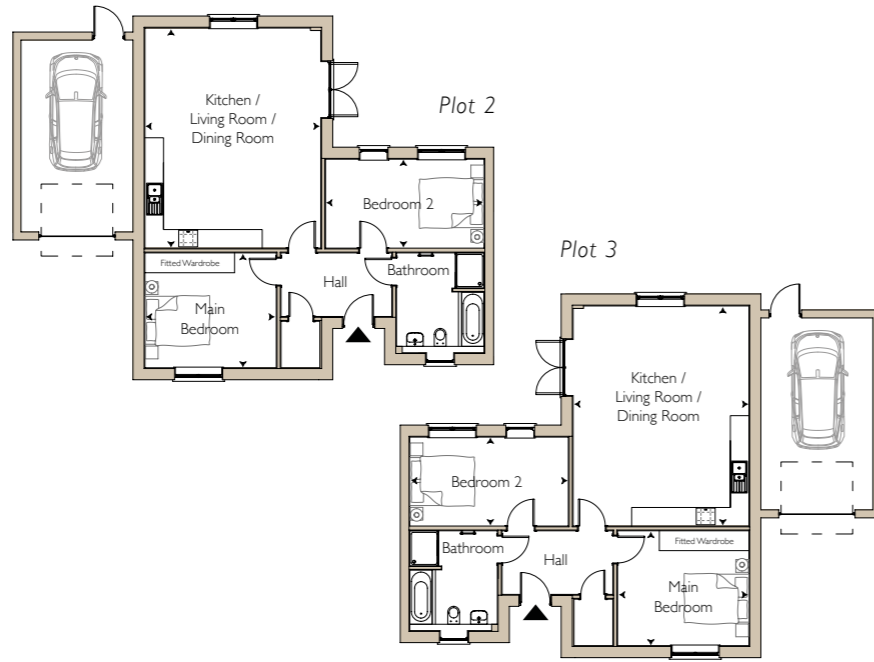
Total Net Sales Area  
936 sq.ft

Kitchen /  
Living / Dining  
5.50m x 6.88m  
(18'0" x 22'7")

Bedroom 1  
4.11m x 3.59m  
(13'6" x 11'9")

Bedroom 2  
4.96m x 2.78m  
(16'3" x 9'1")

# THE EDINGTON



*The Edington is an attractive two-bedroom bungalow, featuring a single garage and EV car charging point. Designed with comfort and practicality in mind, the open-plan kitchen, living, and dining area provides a welcoming central space, with doors opening onto the rear patio and garden for a light and airy feel.*

*Both bedrooms are generously sized, with the main bedroom enjoying fitted wardrobes and a modern en-suite. A sleek family bathroom completes this well-balanced home.*



CGI is of Plot 3

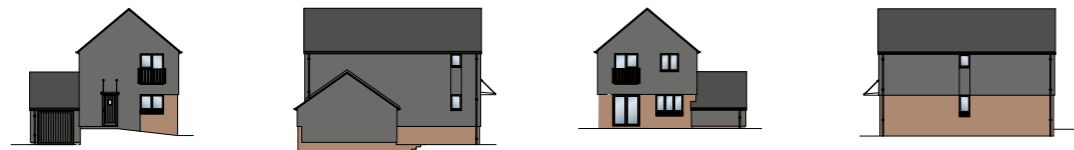
Total Net Sales Area  
936 sq.ft

Please note these measurements have been taken from the plan provided but there may be variations in the final build. Computer generated images are for illustrative purposes only.





CGI is of Plot 13

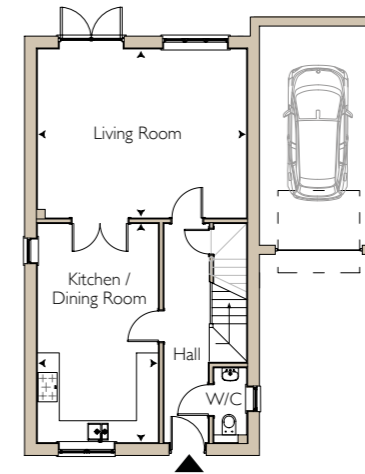
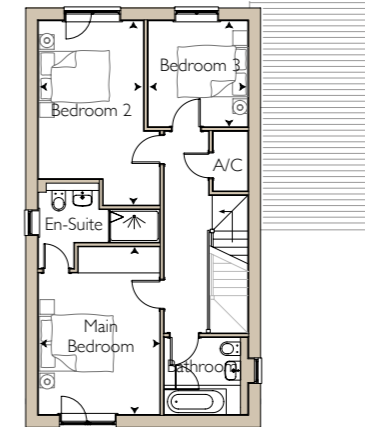


# THE ELMHURST

The Elmhurst is a charming three-bedroom detached (5 & 13) or link-detached (23) home with a single garage including an EV car charging point. Step into a welcoming front-aspect kitchen and dining area, perfect for both everyday living and entertaining. Elegant double doors lead through to a spacious living room, which opens directly onto the rear garden, creating a bright and airy flow throughout. A convenient downstairs WC completes the ground floor.

Upstairs, you'll find three generously sized double bedrooms and a contemporary family bathroom. The main bedroom features fitted wardrobes and a sleek en-suite.

Please note that the layout of Plot 13 is in reverse to that of Plot 5 (shown).



Please note these measurements have been taken from the plan provided but there may be variations in the final build. Computer generated images are for illustrative purposes only.

## PLOTS 5 • 13 • 23

### FIRST

**Main Bedroom**  
3.32m x 4.59m  
(10'11" x 15'1")

**Bedroom 2**  
3.32m x 5.09m  
(10'11" x 16'8")

**Bedroom 3**  
2.73m x 2.9m  
(8'11" x 9'6")

### GROUND

**Kitchen / Dining Room**  
3.32m x 6.00m  
(10'11" x 19'8")

**Living Room**  
5.73m x 4.63m  
(18'10" x 15'2")

Total Net Sales Area  
1335 sq.ft

FIRST

Main Bedroom  
4.39m x 2.98m  
(14'5" x 9'9")

Bedroom 2  
3.03m x 2.90m  
(9'11" x 9'6")

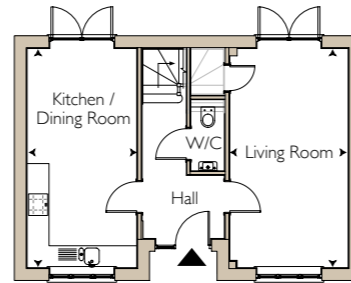
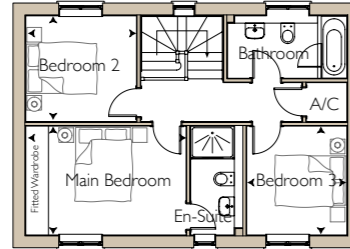
Bedroom 3  
2.74m x 2.98m  
(8'12" x 9'9")

GROUND

Kitchen / Dining Room  
3.00m x 6.20m  
(9'10" x 20'4")

Living Room  
3.24m x 6.20m  
(10'8" x 20'4")

THE POPLAR



The Poplar is a beautifully designed three-bedroom terraced home, complete with two allocated parking spaces and an EV car charging point. The generous kitchen/dining room provides a practical and welcoming space for cooking, dining, and everyday life. A separate, full-length living room offers the ideal place to relax, with French doors opening directly onto the rear garden for a light and airy feel. A downstairs WC adds extra convenience.

On the first floor, you'll find three well-proportioned double bedrooms and a sleek family bathroom. The main bedroom includes fitted wardrobes and its own en-suite.



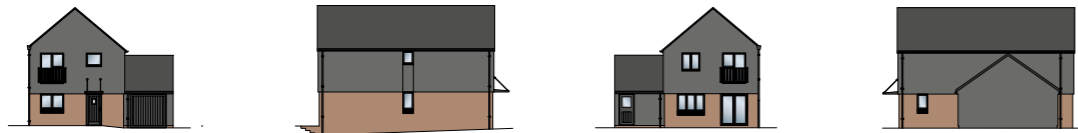
Total Net Sales Area  
1109 sq.ft

Please note these measurements have been taken from the plan provided but there may be variations in the final build. Computer generated images are for illustrative purposes only.





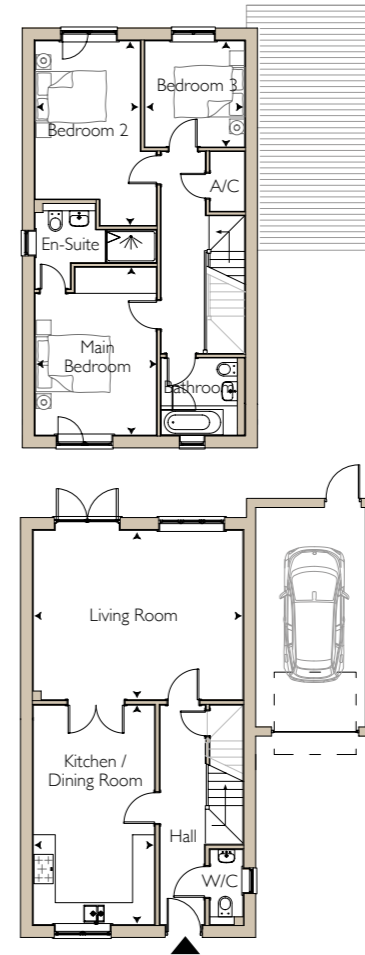
CGI is of Plots 29-30



# THE MERLIN

The Merlin is a well-appointed three-bedroom semi-detached home with a single garage and an EV car charging point. At the front of the home, a well-designed kitchen and dining area provides a sociable hub for mealtimes and gatherings. Double doors lead through to a spacious living room, which in turn opens onto the rear garden — perfect for relaxing or entertaining outdoors. A convenient downstairs WC adds a practical touch.

On the first floor, you'll find three generously sized double bedrooms and a sleek family bathroom. The main bedroom features fitted wardrobes and a stylish en-suite.



Please note these measurements have been taken from the plan provided but there may be variations in the final build. Computer generated images are for illustrative purposes only.

PLOTS 18 • 19 • 29 • 30

## FIRST

**Main Bedroom**  
3.32m x 4.59m  
(10'11" x 15'1")

**Bedroom 2**  
3.32m x 5.09m  
(10'11" x 16'8")

**Bedroom 3**  
2.73m x 2.9m  
(8'11" x 9'6")

## GROUND

**Kitchen / Dining Room**  
3.32m x 6.00m  
(10'11" x 19'8")

**Living Room**  
5.73m x 4.63m  
(18'10" x 15'2")

Total Net Sales Area  
1335 sq.ft

FIRST

Main Bedroom  
4.43m x 3.41m  
(14'6" x 11'2")

Bedroom 2  
3.40m x 2.74m  
(11'2" x 8'12")

GROUND

Kitchen  
2.20m x 4.91m  
(7'3" x 16'1")

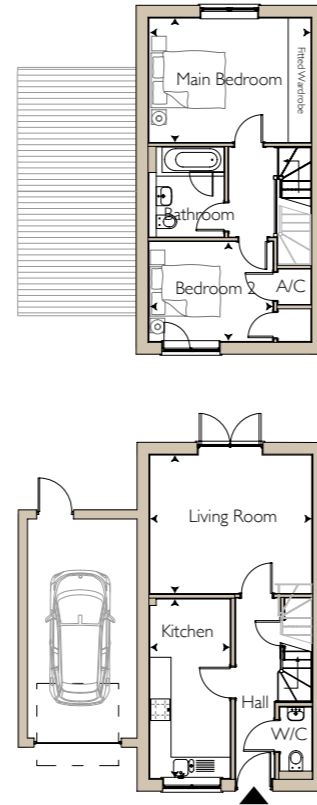
Living Room  
4.44m x 3.79m  
(14'7" x 12'5")

THE MAYFIELD

The Mayfield is a beautiful two-bedroom semi-detached home with a single garage and an EV car charging point. On the ground floor there is a front-aspect kitchen, and separate living room to the rear offering a calm and comfortable space to unwind. French doors open directly onto the patio, seamlessly connecting the indoors with the garden. A downstairs WC adds practicality.

Upstairs, there are two spacious double bedrooms, a home office, or shared living. A well-appointed family bathroom completes this charming home.

Please note that the layout of Plot 21 is in reverse to that of Plot 20 (shown).



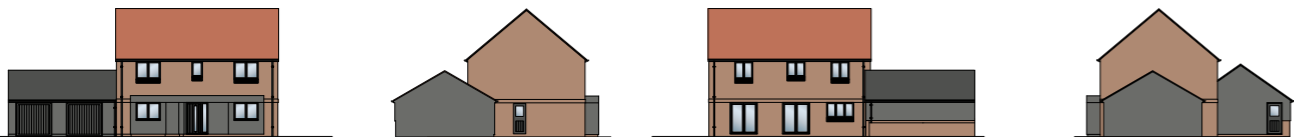
Total Net Sales Area  
840 sq.ft

Please note these measurements have been taken from the plan provided but there may be variations in the final build. Computer generated images are for illustrative purposes only.





CGI is of Plot 28



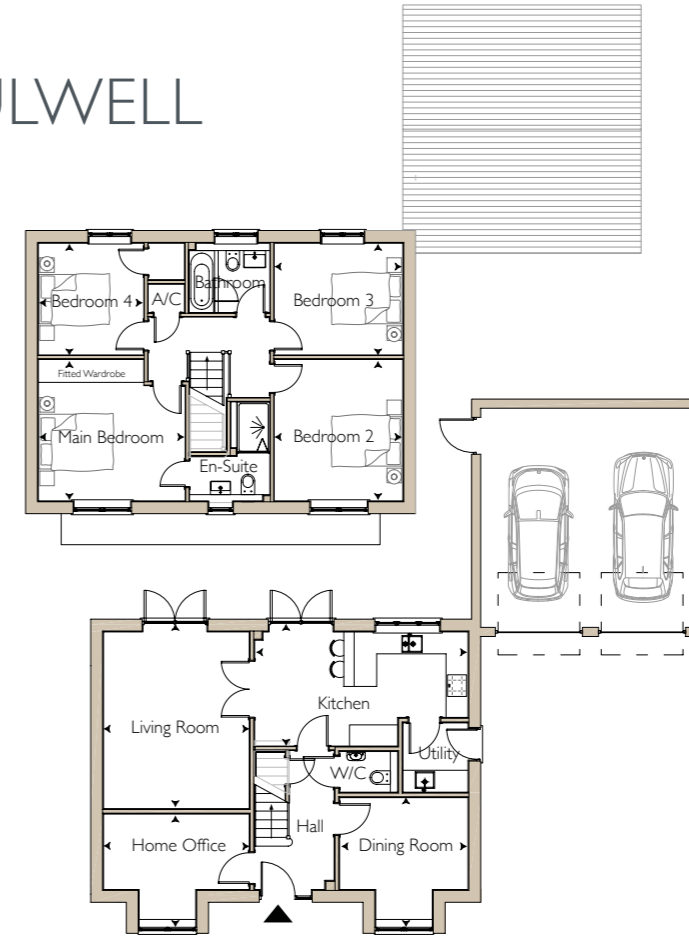
# THE FULWELL

The Fulwell is a superb four-bedroom link-detached home available with either a single (Plot 22) or double (Plot 24 & 28) garage and an EV car charging point. The contemporary kitchen is complemented by a separate utility room and a formal dining room. The spacious living room opens directly onto the garden patio, creating a seamless connection between indoor and outdoor spaces. A dedicated home office and downstairs WC complete the ground floor, ideal for flexible living and working from home.

Upstairs, four well-proportioned double bedrooms and a stylish family bathroom provide ample space for the whole household. The main bedroom benefits from fitted wardrobes and an en-suite.

Please note that in Plot 22, the Home Office does not have a bay window and that the layout of Plot 28 is in reverse to that of Plot 24 (shown).

Please note these measurements have been taken from the plan provided but there may be variations in the final build. Computer generated images are for illustrative purposes only.



PLOTS 22 • 24 • 28

## FIRST

**Main Bedroom**  
4.02m x 3.88m  
(13'2" x 12'9")

**Bedroom 2**  
3.51m x 3.88m  
(11'6" x 12'9")

**Bedroom 3**  
3.51m x 3.06m  
(11'6" x 10'0")

**Bedroom 4**  
2.89m x 3.06m  
(9'6" x 10'0")

## GROUND

**Kitchen**  
5.84m x 3.31m  
(19'2" x 10'10")

**Living Room**  
3.99m x 5.03m  
(13'1" x 16'6")

**Dining Room**  
3.51m x 3.55m  
(11'6" x 11'8")

**Home Office**  
3.99m x 2.07m  
(13'1" x 6'9")

Total Net Sales Area  
1528 sq.ft

FIRST

Main Bedroom  
6.35m x 3.36m  
(20'10" x 11'0")

Bedroom 2  
5.12m x 3.06m  
(16'10" x 10'0")

Bedroom 3  
3.95m x 3.07m  
(12'12" x 10'1")

Bedroom 4  
3.11m x 3.06m  
(10'2" x 10'0")

GROUND

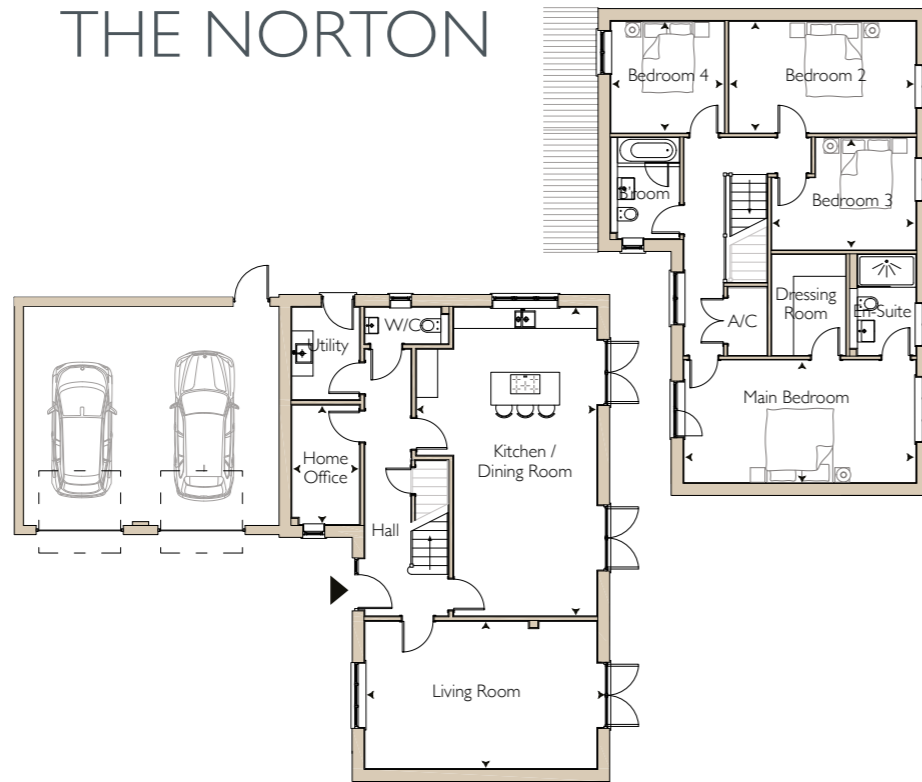
Kitchen / Dining Room  
4.94m x 8.63m  
(16'2" x 28'4")

Living Room  
6.35m x 4.03m  
(20'10" x 13'3")

Home Office  
1.85m x 3.27m  
(6'1" x 10'9")

Total Net Sales Area  
1981 sq.ft

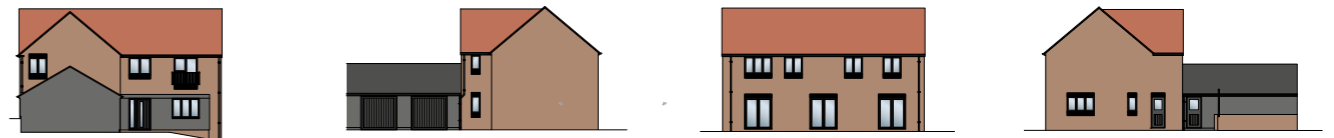
THE NORTON



*Elegant and expansive, The Norton is a substantial four-bedroom link-detached home with a double garage and an EV car charging point. At the heart of the home is a stunning open-plan kitchen and dining area with double doors opening directly onto the rear garden. A separate, generously sized living room also enjoys garden access via patio doors, creating a wonderful flow throughout. A dedicated home office, practical utility room, and downstairs WC complete the ground floor, making this an ideal layout for busy family life or working from home.*

*Upstairs features four spacious double bedrooms and a stylish family bathroom. The luxurious main bedroom is a true retreat, boasting a walk-in dressing room and a private en-suite.*

Please note these measurements have been taken from the plan provided but there may be variations in the final build. Computer generated images are for illustrative purposes only.





# THE PICKFORD

The Pickford is a magnificent four-bedroom detached home with a double garage and an EV car charging point. A luxury kitchen lies at the heart of the home, complemented by a separate dining room — perfect for formal gatherings or relaxed family meals. The spacious living room provides a welcoming retreat, while a dedicated home office offers the ideal setup for home working. A practical utility room and downstairs WC add to the convenience of everyday living.

On the first floor there are four generous double bedrooms and a sleek family bathroom. The main bedroom features fitted wardrobes and an en-suite.



PLOT 26

## FIRST

- Main Bedroom**  
4.54m x 4.57m  
(14'11" x 14'12")
- Bedroom 2**  
3.99m x 3.94m  
(13'1" x 12'11")
- Bedroom 3**  
4.51m x 3.43m  
(14'10" x 11'3")
- Bedroom 4**  
3.99m x 3.34m  
(13'1" x 10'11")

## GROUND

- Kitchen**  
6.14m x 3.49m  
(20'2" x 11'5")
- Dining Room**  
4.48m x 3.01m  
(14'8" x 9'11")
- Living Room**  
4.48m x 4.43m  
(14'8" x 14'6")
- Home Office**  
3.78m x 1.80m  
(12'5" x 5'11")

Total Net Sales Area  
1711 sq.ft

Please note these measurements have been taken from the plan provided but there may be variations in the final build. Computer generated images are for illustrative purposes only.

FIRST

Main Bedroom  
3.32m x 4.59m  
(10'11" x 15'1")

Bedroom 2  
3.32m x 5.09m  
(10'11" x 16'8")

Bedroom 3  
2.73m x 2.9m  
(8'11" x 9'6")

GROUND

Kitchen / Dining Room  
3.32m x 6.00m  
(10'11" x 19'8")

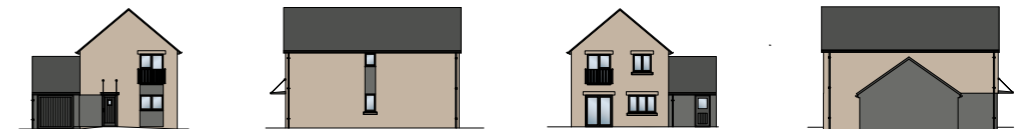
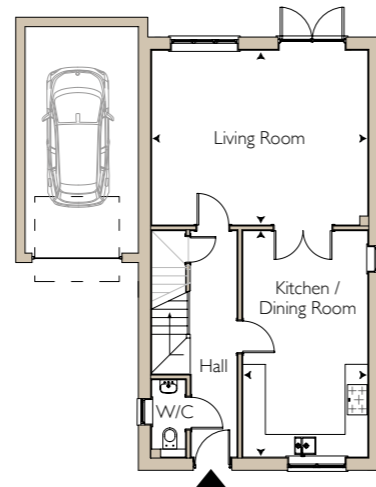
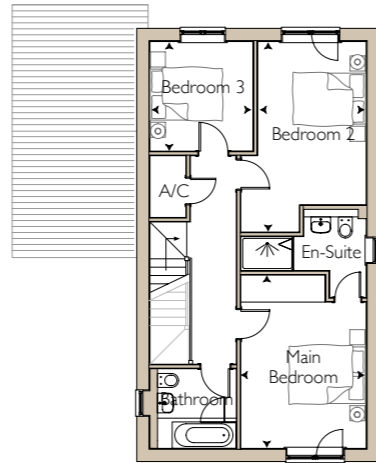
Living Room  
5.73m x 4.63m  
(18'10" x 15'2")

Total Net Sales Area  
1335 sq.ft

THE ELMHURST

The Elmhurst is a charming three-bedroom link-detached home with a single garage and an EV car charging point. Step into a welcoming front-aspect kitchen and dining area – perfect for both everyday living and entertaining. Elegant double doors lead through to a spacious living room, which opens directly onto the rear garden, creating a bright and airy flow throughout. A convenient downstairs WC completes the ground floor.

Upstairs, you'll find three generously-sized double bedrooms and a contemporary family bathroom. The main bedroom features fitted wardrobes and a sleek en-suite.



Please note these measurements have been taken from the plan provided but there may be variations in the final build. Computer generated images are for illustrative purposes only.

# FEATURES AND OPTIONS

## CONSTRUCTION

- Traditional construction with a varied mix of elevations comprising red brick, stone or timber effect cladding with architectural features.
- Concrete roof coverings of Slate Effect and Double Pantiles.
- UPVC black windows.
- LABC 10 year warranty.

## INTERNAL

- Central heating comprising air source heat pump supplying underfloor heating on the ground floor with individual room thermostats and radiators to first floor. Options for individual room programming on the ground floor, control of complete heating system via smartphone or tablet and remote operation over internet (excludes hot water control).
- LED lighting throughout including recessed down lights to kitchen, bathrooms and other selected areas.
- Brushed stainless steel electrical face plates.
- Internal doors – contemporary oak ladder style doors with chrome furniture.
- Decoration – emulsion to walls with white ceilings and white satin finish woodwork.
- Wardrobe – in main bedroom – sliding glass fronted doors with shelf and hanging rail.

## KITCHEN

- Luxury fitted kitchens with a choice of quality finishes subject to specification and stage of construction.
- Fully integrated Neff appliances.

## BATHROOMS

- *En-Suite*  
Villeroy & Boch sanitary ware comprising back to wall WC, wall hung basin and low profile shower tray with Lakes shower enclosure. Hansgrohe chrome fittings with exposed thermostatic shower valve incorporating integrated overhead shower with separate hand rinse.
- *Bathroom*  
Villeroy & Boch sanitary ware comprising back to wall WC, wall hung basin and bath with Lakes bath screen over. Hansgrohe chrome fittings with exposed thermostatic bath/shower mixer with riser rail.
- *Tiling*  
Bathrooms to be tiled to approximately 1.2m high throughout with shower areas fully tiled to ceiling. Kitchen and bathroom floors to be tiled.  
Tile choices available (subject to stage of construction) from a selected range.

## EXTERNAL

- Tarmacadam development road with block pavements to access roads and private driveways.
- Front gardens planted and/or turfed.
- Rear gardens levelled as far as practicable and prepared for customer to finish.
- External socket and tap.
- External lights.
- EV car charging point.

## SERVICES

- Mains electric and water services will be connected.
- Air source heat pump to heating and hot water.
- Telephone/Broadband – FTTP – Fibre To The Premises.
- Foul sewer connected to adopted system.
- Surface water connects to drainage basins.
- Terrestrial TV aerial.

## MANAGEMENT COMPANY

- Oversees the ecology areas and drainage basins
- Retains the private courtyard roads.

## UPGRADE OPTIONS

- Granite kitchen worktops (subject to stage of build).
- Marble to bathroom tops (subject to stage of build).
- Flooring to areas other than kitchen and bathrooms.
- Kitchen & Utility additions.
- Satellite dish.
- HD distribution options.
- Ceiling mounted wireless access points.
- Security system.
- Mirrors and Demista pads.
- Seed or turf to rear garden.
- Bathroom accessories.
- Electric garage doors.





*Discover the many wonderful footpaths and trails surrounding Bratton such as The White Horse Trail, Wessex Ridgeway, Imber Range Perimeter Path and the Mid Wilts Way, all waiting for you to explore*

# A PROUD HISTORY

At Ashford Homes, we want you to buy and move into your new home with complete confidence, so you can start enjoying it from the very first day. From the moment your purchase is agreed, our dedicated team works closely with you, taking care of every detail and keeping you fully informed throughout the process.

For over 35 years, Ashford Homes has been crafting beautiful homes across the South West, combining timeless design with modern living. Quality, service, and professionalism are at the heart of everything we do. We take great pride in our reputation for creating innovative, beautifully designed homes that offer generous living spaces, meticulous attention to detail, and superior workmanship.

Each home is individually designed and built to the highest standards by our skilled local team. For your peace of mind, every Ashford Homes property comes with a 10-year structural warranty from LABC providing comprehensive protection against structural defects for the first decade of ownership, or a 6-year Professional Consultant's Certificate for refurbished properties.

We are also proud to have been recognised for excellence, having received three prestigious LABC awards in 2024 and 2025, including a National Award for our outstanding development, The Hawthorns in Great Somerford.

“We have just moved into our new home built by Ashford Homes. The house is absolutely superb. We could not have had, or wished for, any better service from the whole Ashford team. From start to finish nothing had been too much trouble, advice given has been quite excellent and given the very tight deadlines we imposed on Ashford Homes all were met or exceeded. Ashford Homes took all the stress out of our home purchase and we cannot recommend them too highly to any perspective buyer.”

Mr H

“An absolutely fabulous developer. I have had nothing but the best communication, expertise and professionalism from the company and my new home is absolutely beautiful. The finish is fabulous, with high quality white goods, attention to detail and beautiful touches. Don't hesitate if you are interested in an Ashford Homes property – you won't regret it. Local developers who care about the local developments.”

Mrs J



Protection for new-build home buyers

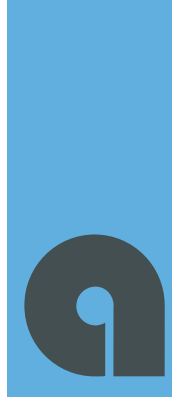


“The team at Ashford Homes provide exceptional customer service. They take pride in the quality of the homes they build and communication is quick, friendly and helpful.”

Mr & Mrs C

Having bought a property from Ashford Homes in the past, we had no hesitation in purchasing our next home with Ashfords. Their professionalism and attention to detail is excellent. The whole team have been efficient, helpful and understanding throughout the process. Thank you!”

Mr & Mrs H



**ASHFORD  
HOMES**  
(SOUTH WESTERN) LIMITED

*Crafting beautiful homes*

## Ashford Homes (South Western) Ltd

Doric House, Middleton Drive, Bradford on Avon, Wiltshire, BA15 1GB

t: 01225 791155

e: sales@ashford-homes.co.uk

[www.ashford-homes.co.uk](http://www.ashford-homes.co.uk)



### Viewing

Strictly by appointment with Ashford Homes (South Western) Ltd or our nominated agents. Please use the contact details above.

### Reservation

A reservation fee will secure your home at White Horse Valley.

### Strakers

6-7 The Market Place, Devizes,  
Wiltshire SN10 1HT

t: 01380 723451

e: devizes@strakers.co.uk

[www.strakers.co.uk](http://www.strakers.co.uk)

**strakers**